

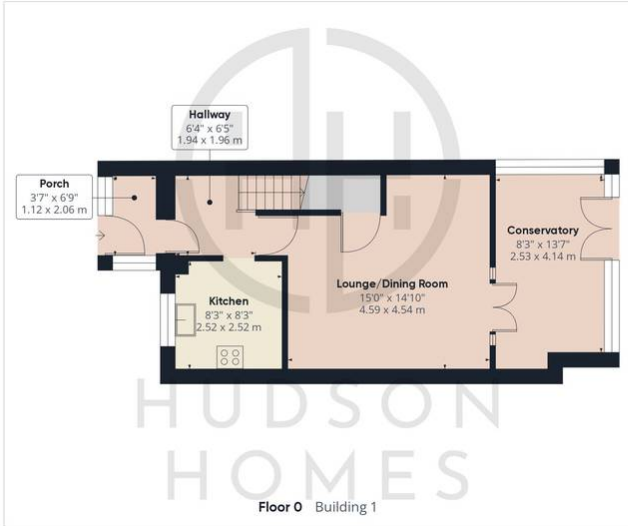


6 Stokesay Court, Peterborough

£245,000 Freehold

CLOSE TO PETERBOROUGH CITY HOSPITAL • CLOSE TO JACK HUNT SCHOOL & LONGTHORPE PRIMARY SCHOOL
• 2.3 MILES TO TRAIN STATION & CITY CENTRE • SINGLE GARAGE EN BLOC & TWO FRONT PARKING SPACES •
GAS CENTRAL HEATING WITH REPLACEMENT COMBI BOILER • uPVC CONSERVATORY • BUILT IN WARDROBES
TO BEDROOM ONE • RE-FITTED BATHROOM SUITE • COUNCIL TAX BAND B £1620 pa • TOTAL FLOOR AREA 57
SQUARE METRES





Approximate total area⁽¹⁾
961.62 ft²
89.34 m²

(1) Excluding balconies and terraces

While every attempt has been made to ensure accuracy, all measurements are approximate, not to scale. This floor plan is for illustrative purposes only.

GIRAFFE360

Hudson Homes

8 Crusader Court, Yaxley, Peterborough PE7 3PU

Phone: [01733 788222](tel:01733788222)

Email: info@hudson-homes.co.uk