

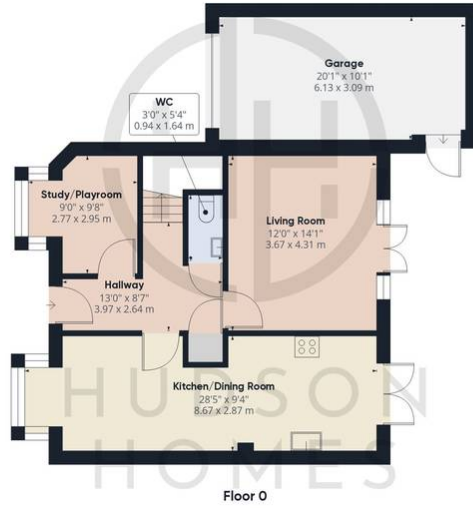


14 Poppy Close, Yaxley

£350,000 Freehold

COUNTRYSIDE VIEWS TO THE FRONT ASPECT • INTEGRATED KITCHEN/DINING ROOM • STUDY/PLAYROOM •
FAMILY BATHROOM & CLOAKROOM • EN-SUITE TO BEDROOM ONE • SINGLE GARAGE & DRIVEWAY PARKING •
INTERNAL FLOOR AREA 115 SQUARE METRES • CLOSE TO SHOPS & SCHOOLS • COUNCIL TAX BAND D £2322 •
EASY ACCESS TO THE A1(M) & A605





Approximate total area^①
1404.07 ft²
130.44 m²



(1) Excluding balconies and terraces

While every attempt has been made to ensure accuracy, all measurements are approximate, not to scale. This floor plan is for illustrative purposes only.

GIRAFFE360

Hudson Homes

8 Crusader Court, Yaxley, Peterborough PE7 3PU

Phone: [01733 788222](tel:01733788222)

Email: info@hudson-homes.co.uk