



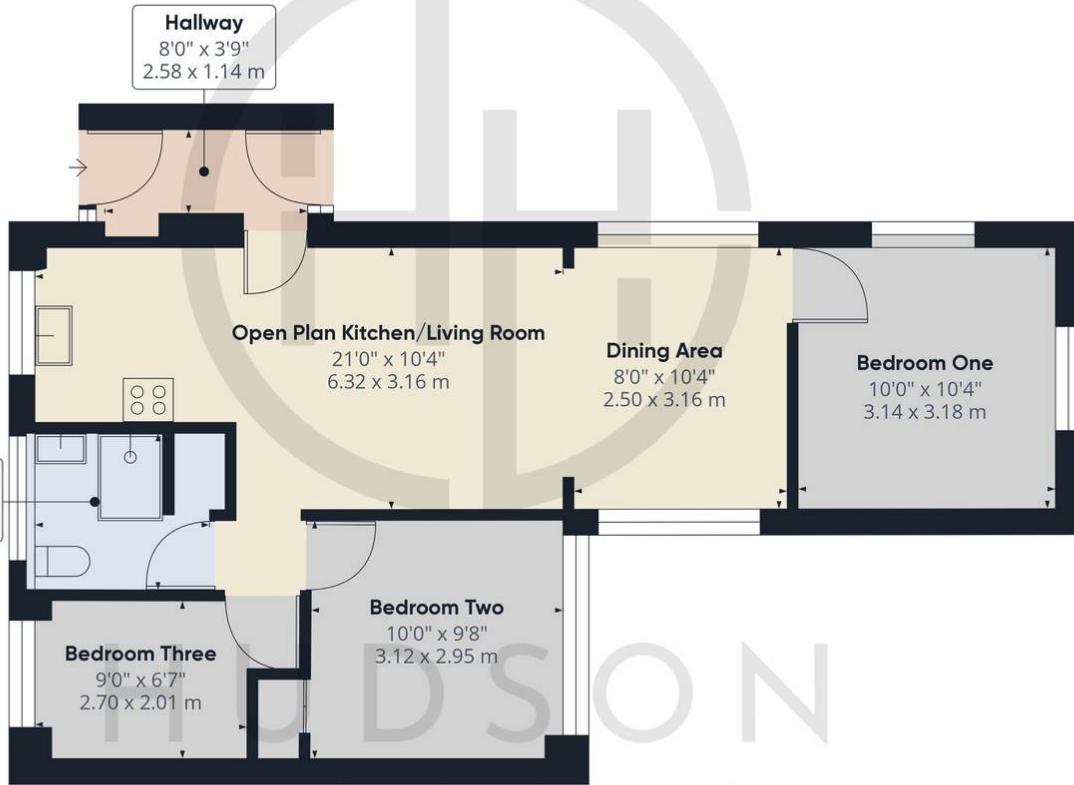
## 9 Chesterton Grove, Peterborough

£240,000 Freehold

FULLY REFURBISHED THROUGHOUT • NO FORWARD CHAIN • OPEN PLAN KITCHEN/DINING/LIVING • TWO DOUBLE & ONE SINGLE BEDROOM • SHOWER ROOM • WORCESTER BOILER WITH GAS SAFETY CERTIFICATE • DRIVEWAY PARKING • SHORT WALK TO SHOPS & SCHOOLS • 2.2 MILES TO THE RAILWAY STATION & CITY CENTRE • VIEWING IS HIGHLY RECOMMENDED



HUDSON  
HOMES



Approximate total area<sup>(1)</sup>  
665.53 ft<sup>2</sup>  
61.83 m<sup>2</sup>

(1) Excluding balconies and terraces

While every attempt has been made to ensure accuracy, all measurements are approximate, not to scale. This floor plan is for illustrative purposes only.

GIRAFFE360

Hudson Homes

8 Crusader Court, Yaxley, Peterborough PE7 3PU

Phone: [01733 788222](tel:01733788222)

Email: [info@hudson-homes.co.uk](mailto:info@hudson-homes.co.uk)