

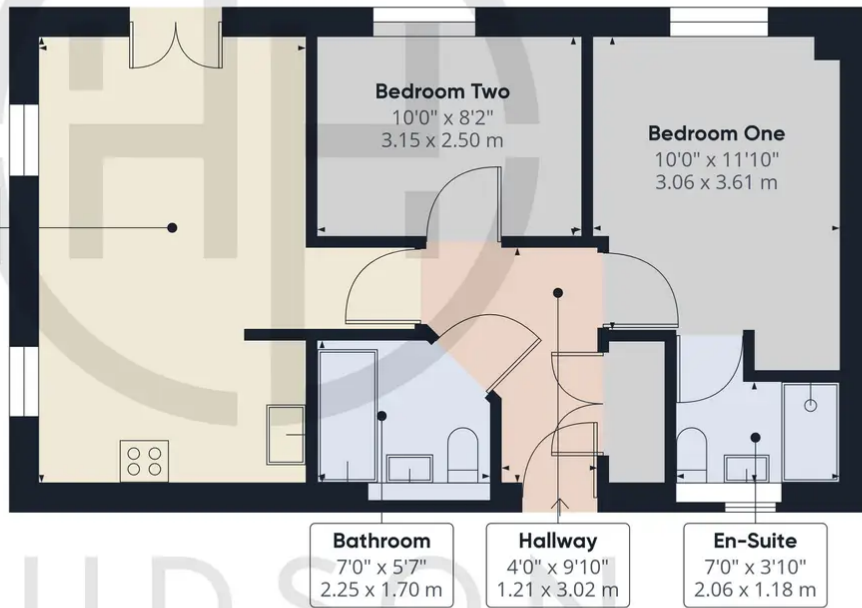


## 62 Constantine Drive, Stanground South

£150,000 Leasehold

GROUND FLOOR TWO BEDROOM FLAT • TWO ALLOCATED PARKING SPACES • FULLY INTEGRATED KITCHEN • OPEN PLAN LIVING / DINING / KITCHEN • 998 YEAR LEASE WHICH STARTED IN 2019 • LOVELY CONDITION THROUGHOUT - VIEWING RECOMMENDED • SERVICE CHARGE £ 114.87pcm & GROUND RENT £125pa • BATHROOM & EN-SUITE to BEDROOM ONE • NO FORWARD CHAIN • SHORT WAK TO SHOPS





**Approximate total area<sup>(1)</sup>**  
576.08 ft<sup>2</sup>  
53.52 m<sup>2</sup>

(1) Excluding balconies and terraces

While every attempt has been made to ensure accuracy, all measurements are approximate, not to scale. This floor plan is for illustrative purposes only.

GIRAFFE360

**Hudson Homes**

**8 Crusader Court, Yaxley, Peterborough PE7 3PU**

**Phone: [01733 788222](tel:01733788222)**

**Email: [info@hudson-homes.co.uk](mailto:info@hudson-homes.co.uk)**

**[www.hudson-homes.co.uk](http://www.hudson-homes.co.uk)**