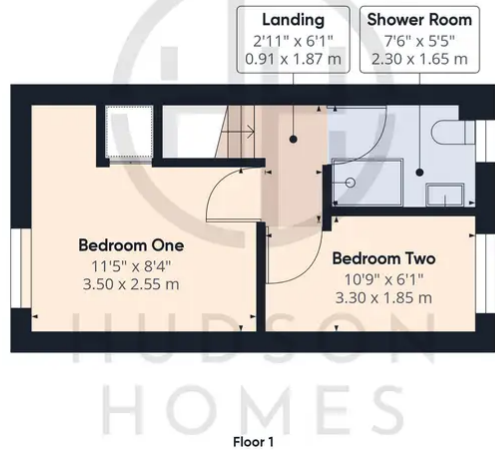




2 Maple Court, Yaxley

£210,000 Freehold

GOOD SIZE SOUTH FACING REAR GARDEN • REFITTED KITCHEN with INTEGRATED APPLIANCES • CONSERVATORY/UTILITY AREA • TWO DOUBLE BEDROOMS • RE-FITTED SHOWER ROOM • GARDEN CABIN THAT FITS A HOT TUB • DRIVEWAY PARKING & WOODEN GARAGE • COUNCIL TAX BAND A £1548 • IDEAL 1st TIME BUY • OPEN PLAN LIVING



Approximate total area⁽¹⁾
796.55 ft²
74 m²

Reduced headroom
10.71 ft²
1 m²

(1) Excluding balconies and terraces

Reduced headroom (below 1.5m/4.92ft)

While every attempt has been made to ensure accuracy, all measurements are approximate, not to scale. This floor plan is for illustrative purposes only.

GIRAFFE360

You can include any text here. The text can be modified upon generating your brochure.