



**4 Oldeamere Way, Whittlesey**  
Peterborough



Offers Over **£400,000**



## 4 Oldeamere Way

Whittlesey, Peterborough

If space and style are on your radar, this 6 Bedroom Detached House is a top-tier contender. Step inside and kiss goodbye to chain-related headaches - no forward chain here to hold you back.

Spread out across a generous 149 square metres, this abode boasts an airy open plan lounge and dining room, perfect for hosting friends or just lounging about in style. The kitchen/breakfast room is a culinary haven waiting to be explored, while the utility room and cloakroom offer practicality with a touch of convenience.

No need to fight over bathroom time in this household - a family bathroom and an en-suite bathroom add a splash of luxury to every-day routines. Plus, with an integral single garage and driveway parking, convenience is always at your doorstep.

Ever dreamt of turning your home into a personal sanctuary? Look no further than the garden cabin, which is just waiting for your artistic touch - transform it into a cosy office or a private gym to suit your lifestyle.

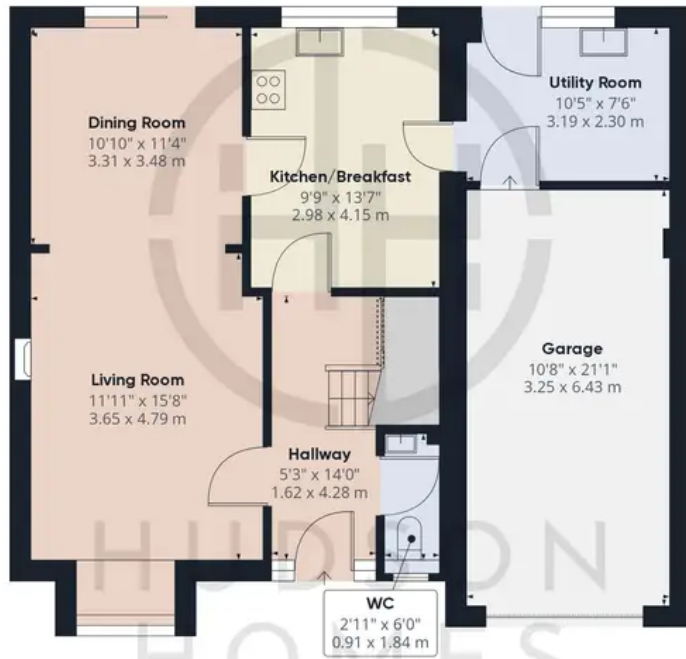
Location, location, location - this property delivers with a short walk to shops and schools. Forget about those last-minute morning rushes - everything you need is just around the corner.

And let's talk about money matters. With a council tax band E of £2331 per annum, budgeting for the finer things in life just got a whole lot easier.

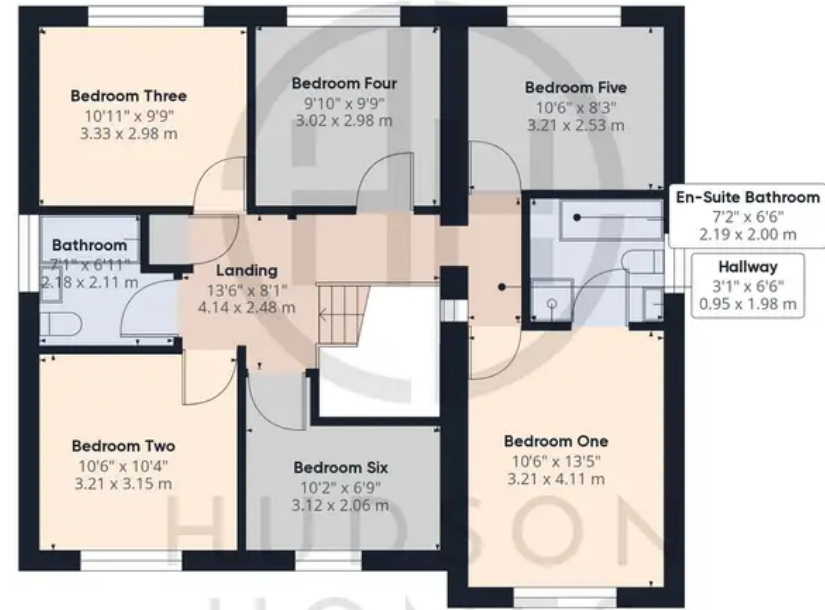
It's time to ditch the ordinary and embrace the extraordinary. This exceptional property offers space, style,







Floor 0 Building 1



Floor 1 Building 1



Floor 0 Building 2



HUDSON  
HOMES

Approximate total area<sup>(1)</sup>

2019.7 ft<sup>2</sup>

187.64 m<sup>2</sup>

Reduced headroom

1.08 ft<sup>2</sup>

0.1 m<sup>2</sup>

(1) Excluding balconies and terraces

☐ Reduced headroom  
(below 1.5m/4.92ft)

While every attempt has been made to ensure accuracy, all measurements are approximate, not to scale. This floor plan is for illustrative purposes only.

GIRAFFE360



## Hudson Homes Estate Agents

122a Main Street, Yaxley - PE7 3LP

01733 788222

[info@hudson-homes.co.uk](mailto:info@hudson-homes.co.uk)

[www.hudson-homes.co.uk/](http://www.hudson-homes.co.uk/)

