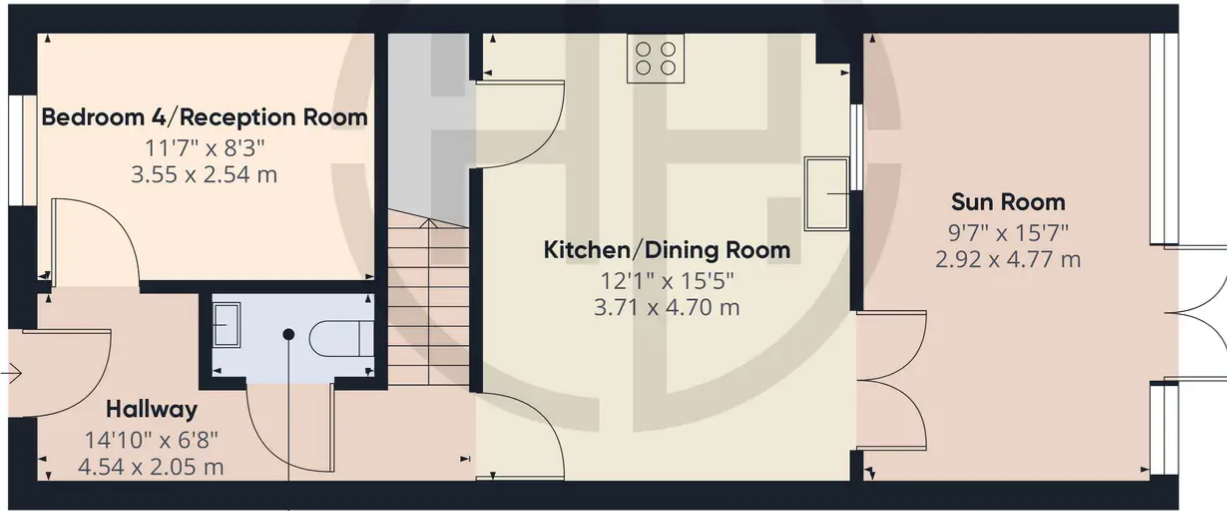




## 52 Shipton Grove, Peterborough

£295,000 Freehold

KITCHEN/DINING ROOM with ISLAND • THREE/FOUR BEDROOMS • TWO/THREE RECEPTION ROOMS • FAMILY BATHROOM, TWO EN-SUITES PLUS CLOAKROOM • SINGLE GARAGE & PARKING FOR 4-6 VEHICLES • CLOSE WALK TO SHOPS & SCHOOLS • COUNCIL TAX BAND = C £1851 • INTERNAL FLOOR AREA 119 SQUARE METRES • 2.4 MILES FROM THE TRAIN STATION & CITY CENTRE • WELL MAINTAINED FAMILY HOME



Approximate total area<sup>(1)</sup>  
565.36 ft<sup>2</sup>  
52.52 m<sup>2</sup>

(1) Excluding balconies and terraces

While every attempt has been made to ensure accuracy, all measurements are approximate, not to scale. This floor plan is for illustrative purposes only.

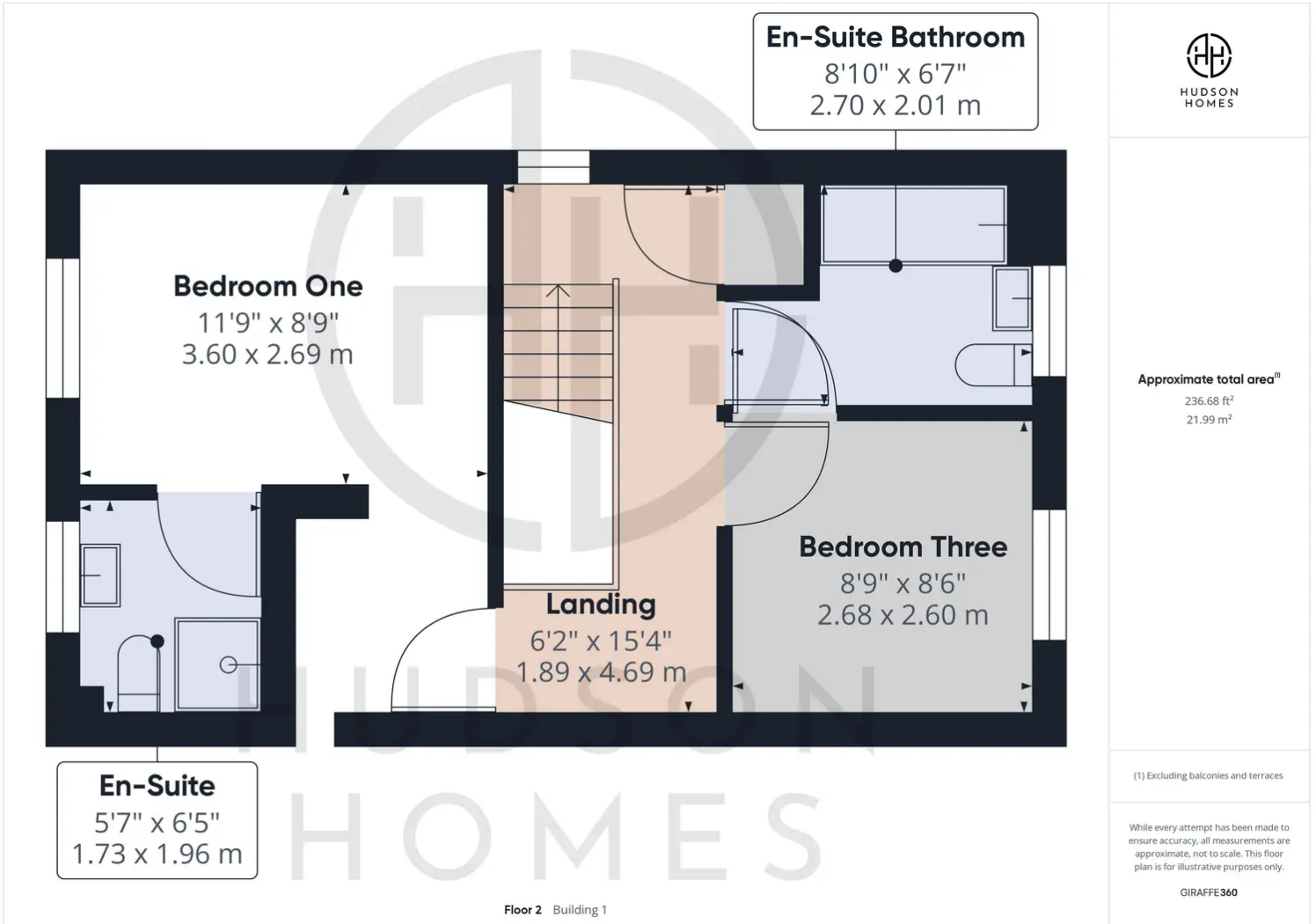
GIRAFFE360

Floor 0 Building 1

You can include any text here. The text can be modified upon generating your brochure.



You can include any text here. The text can be modified upon generating your brochure.



You can include any text here. The text can be modified upon generating your brochure.