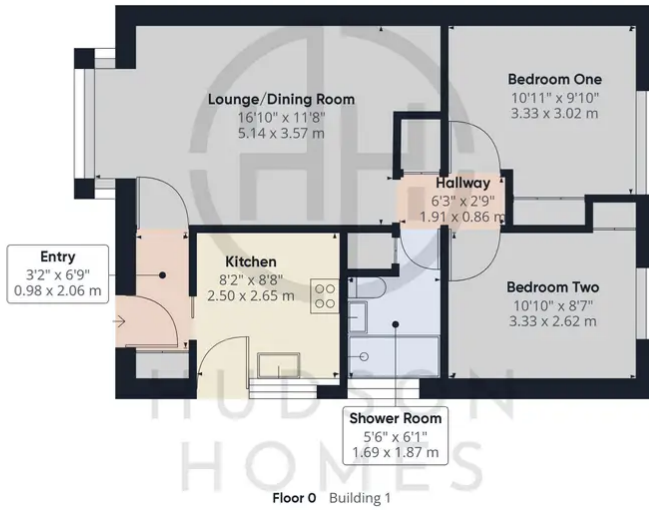




## 12 Bramall Court, Peterborough

£265,000 Freehold

NO FORWARD CHAIN • LOUNGE/DINER • TWO DOUBLE BEDROOMS with FITTED CUPBOARDS • DRIVE THROUGH SINGLE GARAGE & PARKING FOR 3 VEHICLES • COUNCIL TAX BAND C = £1851 • SHORT WALK TO SHOPS • CLOSE TO PETERBOROUGH CITY HOSPITAL • 2.1 MILES TO THE RAILWAY STATION & CITY CENTRE • RECENTLY REDECORATED & NEW CARPETS • VIEWING RECOMMENDED



**Approximate total area<sup>(1)</sup>**  
738.88 ft<sup>2</sup>  
68.64 m<sup>2</sup>



(1) Excluding balconies and terraces

While every attempt has been made to ensure accuracy, all measurements are approximate, not to scale. This floor plan is for illustrative purposes only.

GIRAFFE360

You can include any text here. The text can be modified upon generating your brochure.