



26 Arborfield Close, Helpston
Peterborough



£325,000



26 Arborfield Close

Helpston, Peterborough

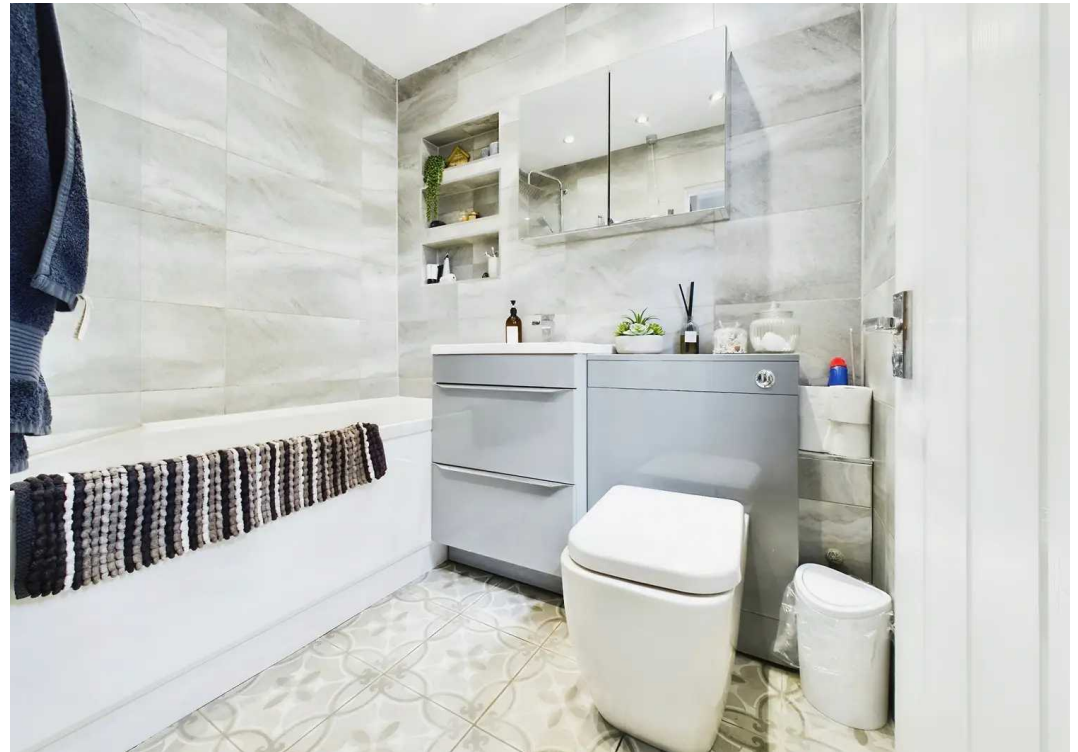
Nestled in a peaceful cul-de-sac, this charming 3-bedroom semi-detached house offers a delightful retreat. With a total internal floor area of 113 square metres, this cosy abode boasts three generous double bedrooms, a recently re-fitted downstairs bathroom, and two inviting reception rooms that are perfect for relaxing or entertaining. Plus, soak up the sunshine in the uPVC conservatory as you gaze out onto the lush greenery that the rear garden provides. A highlight of this property is its unique feature – it backs onto open fields, offering a tranquil and picturesque backdrop that's simply priceless.

Step outside to discover the enchanting outside space that this property has to offer. The fully enclosed rear garden is a haven of tranquility, with a manicured lawn, mature borders, and a raised deck seating area – ideal for lazy weekend BBQs or quiet evenings under the stars. The side access leads to the front of the property, where you'll find the oil tank and gate for convenience. A single garage in a bloc opposite the house provides secure parking or additional storage space. The front garden is a welcoming sight, with parking space for two vehicles, graveled surfaces, and a boundary hedge that ensures privacy and seclusion. Don't miss the chance to make this delightful property your own – a perfect blend of comfort, style, and nature's beauty in one idyllic package.

Council Tax band: B

Tenure: Freehold

- BACKS ONTO OPEN FIELDS
- INTERNAL FLOOR AREA 113 SQUARE METRES
- COUNCIL TAX BAND = B £1620







HUDSON
HOMES



Approximate total area⁽¹⁾

1047.88 ft²
97.35 m²



(1) Excluding balconies and terraces

While every attempt has been made to ensure accuracy, all measurements are approximate, not to scale. This floor plan is for illustrative purposes only.

GIRAFFE 360



Hudson Homes Estate Agents

122a Main Street, Yaxley - PE7 3LP

01733 788222

info@hudson-homes.co.uk

www.hudson-homes.co.uk/

