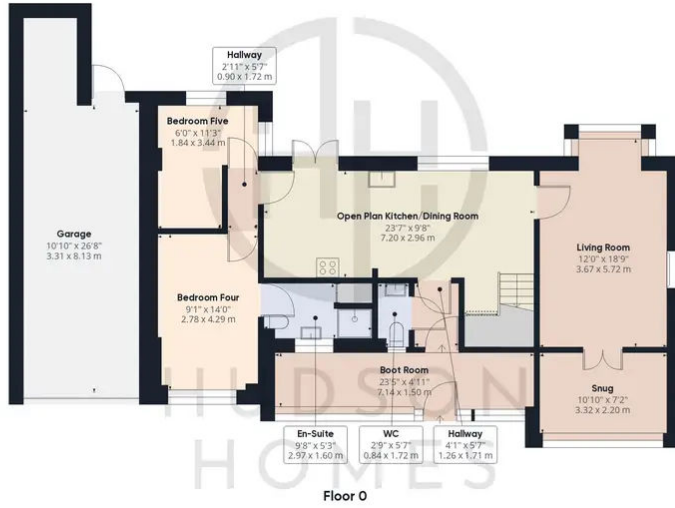




70 Crowland Road, Eye

£390,000 Freehold

INDIVIDUALLY BUILT by the CURRENT OWNERS • INGLE NOOK FIREPLACE with WOODBURNER • SNUG OFF THE LIVING ROOM • OPEN PLAN/KITCHEN DINING ROOM • FAMILY BATHROOM & CLOAKROOM • DOWNSTAIRS BEDROOM with EN-SUITE SHOWER ROOM • SINGLE GARAGE & PARKING FOR UP TO 8 VEHICLES • TOTAL FLOOR AREA 137 SQUARE METRES • COUNCIL TAX BAND D £2083 • NONE ESTATE VILLAGE LOCATION



Approximate total area⁽¹⁾

1859.25 ft²
172.73 m²

Reduced headroom

27.06 ft²
2.51 m²



(1) Excluding balconies and terraces

Reduced headroom
(below 1.5m/4.92ft)

While every attempt has been made to ensure accuracy, all measurements are approximate, not to scale. This floor plan is for illustrative purposes only.

GIRAFFE360