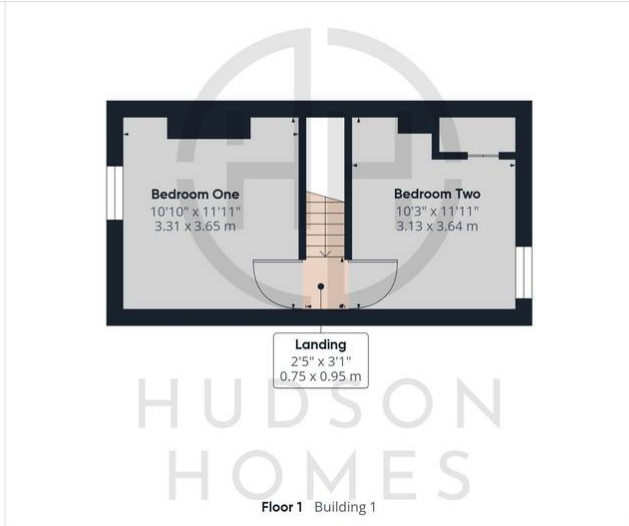
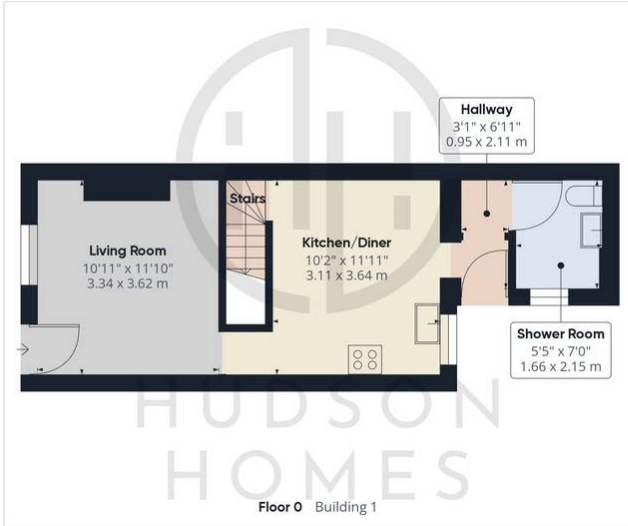




12 Main Street, Yaxley

£155,000 | £850 pcm Freehold

CURRENTLY LET OUT AT £850 PCM • NO FORWARD CHAIN • COUNCIL TAX BAND A £1461 • TOTAL FLOOR AREA 60 SQUARE METRES • KITCHEN/DINER • DOWNSTAIRS SHOWER ROOM • BRICK BUILT OUTSIDE STORAGE SPACE DIVIDED INTO TWO SECTIONS • GAS CENTRAL HEATING • LOCATED OFF THE MAIN ROAD WITH PARKING TO THE FRONT OF THE PROPERTY • ENCLOSED REAR GARDEN



Approximate total area⁽¹⁾
 697.43 ft²
 64.79 m²

(1) Excluding balconies and terraces

While every attempt has been made to ensure accuracy, all measurements are approximate, not to scale. This floor plan is for illustrative purposes only.

GIRAFFE360

Hudson Homes

8 Crusader Court, Yaxley, Peterborough PE7 3PU

Phone: [01733 788222](tel:01733788222)

Email: info@hudson-homes.co.uk