



3 Nene Close, Whittlesey
Peterborough



£295,000



3 Nene Close

Whittlesey, Peterborough

Welcome to your dream home – an extended four-bedroom semi-detached house that's been thoughtfully designed to meet all your family's needs. Step inside to discover a fully integrated kitchen/diner, perfect for hosting those memorable family dinners, alongside a handy utility room for those busy laundry days. With a refitted shower room and cloakroom, this home offers both style and practicality. The property boasts two reception rooms, adding that extra touch of space for relaxing or entertaining guests.

Upstairs, you'll find four well-proportioned bedrooms all in immaculate condition, offering plenty of room for the whole family. Outside, the front of the property boasts driveway parking for three vehicles leading to a garage with a convenient roller door, providing ample storage space for all your bits and bobs. The rear garden is a true oasis, fully enclosed with gated side access for added security. Enjoy lazy summer afternoons on the lawn or host BBQ parties on the patio area surrounded by a variety of shrubs and bushes. With external tap and lighting, as well as a garden shed for your gardening tools, this outdoor space has it all. And let's not forget the off-road parking for three vehicles, making life that little bit easier for you and your family.

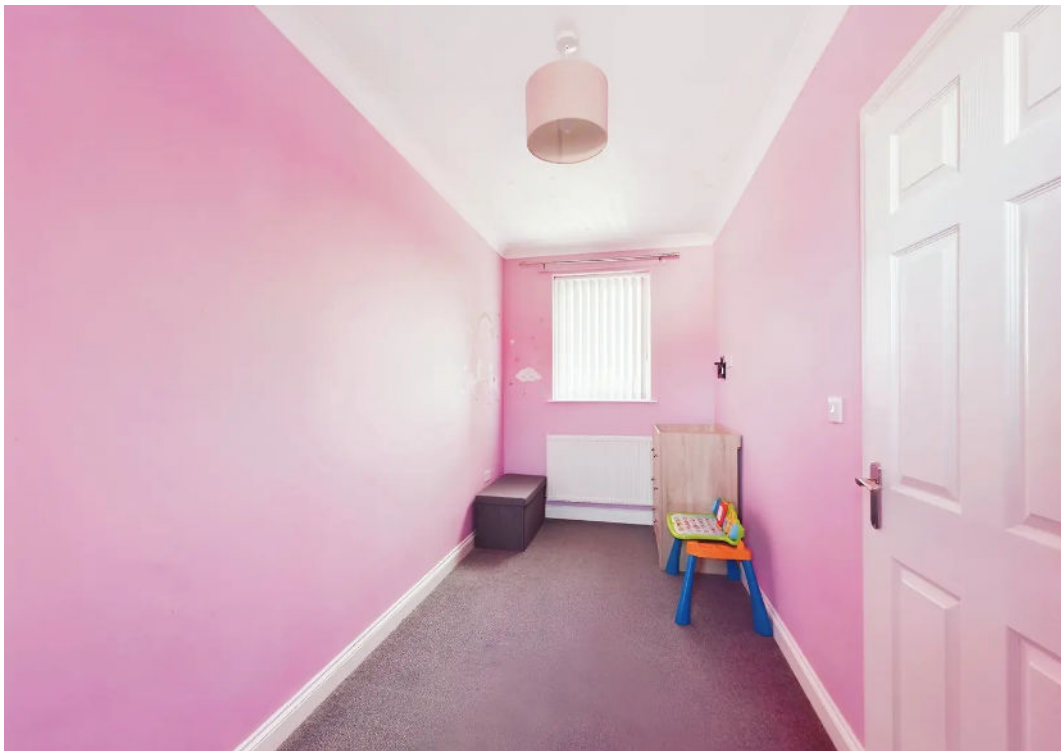
Situated close to the town centre and schools, this property benefits from gas central heating and uPVC double glazing. Totalling 118 square metres, this home is not just a place to live, but a place to thrive. Don't miss out on this fantastic opportunity to make this gem your own!

Council Tax band: B

Tenure: Freehold

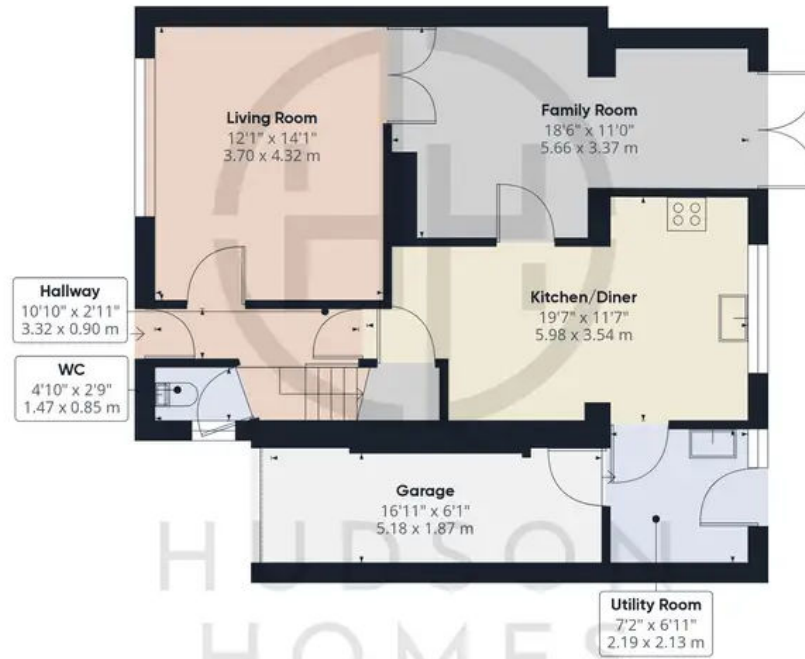
EXTENDED FOUR BEDROOM FAMILY HOME







HUDSON
HOMES

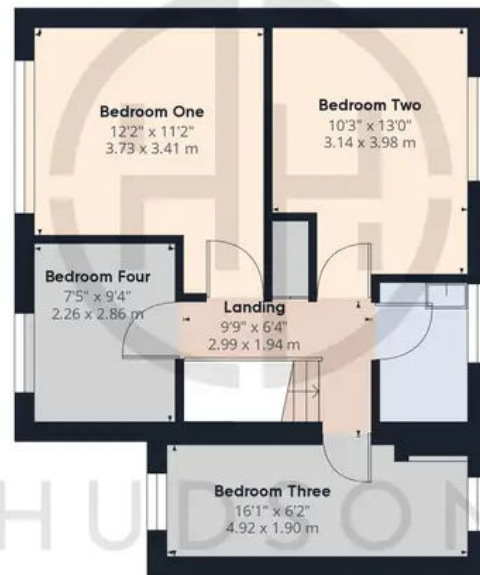


Floor 0

Approximate total area⁽¹⁾

1320.47 ft²

122.68 m²



Floor 1

(1) Excluding balconies and terraces

While every attempt has been made to ensure accuracy, all measurements are approximate, not to scale. This floor plan is for illustrative purposes only.

GIRAFFE360



Hudson Homes Estate Agents

122a Main Street, Yaxley - PE7 3LP

01733 788222

info@hudson-homes.co.uk

www.hudson-homes.co.uk/

