



16 Broadstone Drive, Hampton Water
Peterborough



£285,000



16 Broadstone Drive

Hampton Water, Peterborough

Presenting an exceptional opportunity to acquire this 3-bedroom semi-detached house, with the added advantage of no forward chain. Situated within a desirable locale, this property boasts a council tax band C equating to £1745 per annum. The integrated kitchen/dining room offers a contemporary and functional space, complemented by a total floor area of 85 square metres.

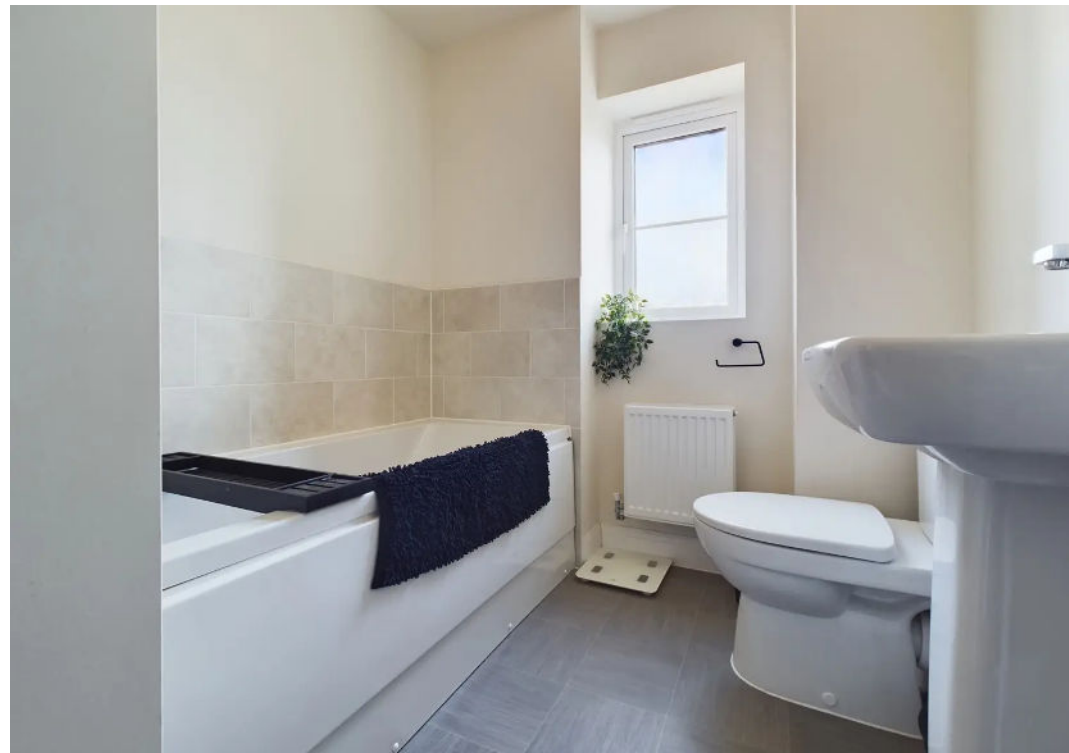
The master bedroom features an en-suite and fitted wardrobes, ensuring ample storage solutions. Completing the accommodation are a family bathroom and a convenient cloakroom for guests. For parking convenience, the property offers rear driveway space for two vehicles and an additional parking bay. The fully enclosed rear garden provides both privacy and security, with the convenience of an access gate.

Located in proximity to local amenities, including shops and schools, this home presents an ideal setting for families and professionals alike. With so much to offer, viewing is highly recommended to appreciate all that this property has to offer.

Council Tax band: C

Tenure: Freehold

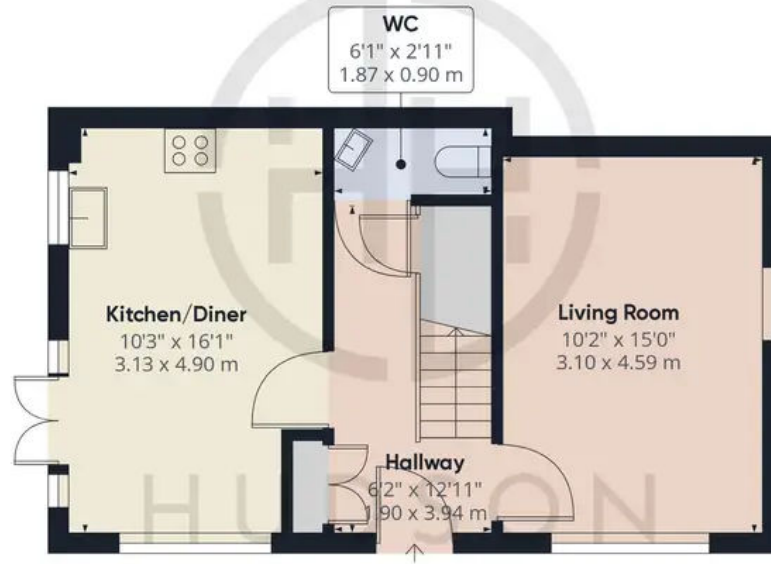
- NO FORWARD CHAIN
- COUNCIL TAX BAND C = £1745 pa
- INTEGRATED KITCHEN/DINING ROOM
- TOTAL FLOOR AREA 85 SQUARE METRES
- EN-SUITE & FITTED WARDROBES TO BEDROOM ONE
- FAMILY BATHROOM & CLOAKROOM







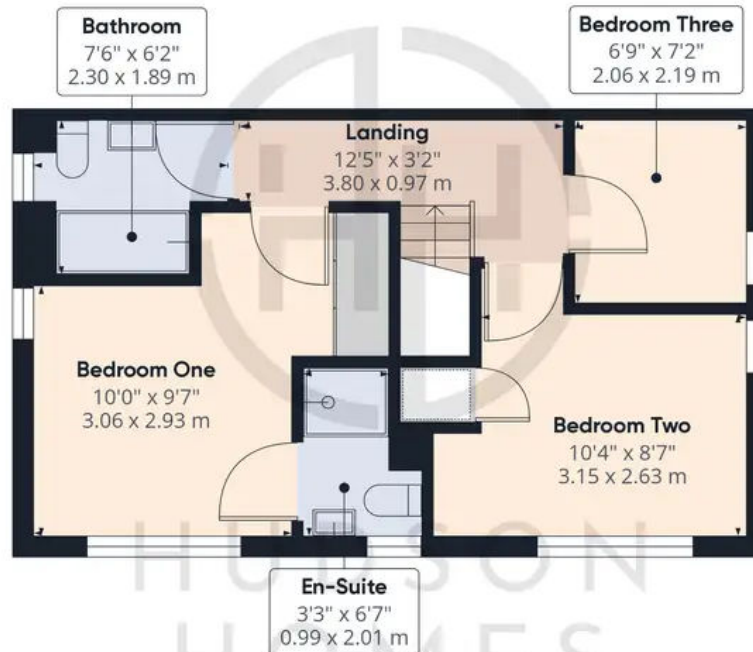
HUDSON
HOMES



Approximate total area⁽¹⁾

831.6 ft²

77.26 m²



(1) Excluding balconies and terraces

While every attempt has been made to ensure accuracy, all measurements are approximate, not to scale. This floor plan is for illustrative purposes only.

GIRAFFE360



Hudson Homes Estate Agents

122a Main Street, Yaxley - PE7 3LP

01733 788222

info@hudson-homes.co.uk

www.hudson-homes.co.uk/

