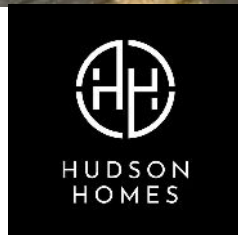




45 Fieldfare Drive, Stanground
Peterborough



£385,000



45 Fieldfare Drive

Stanground, Peterborough

This beautifully presented 4-bedroom detached house is an exceptional find for families seeking a spacious home in a convenient location.

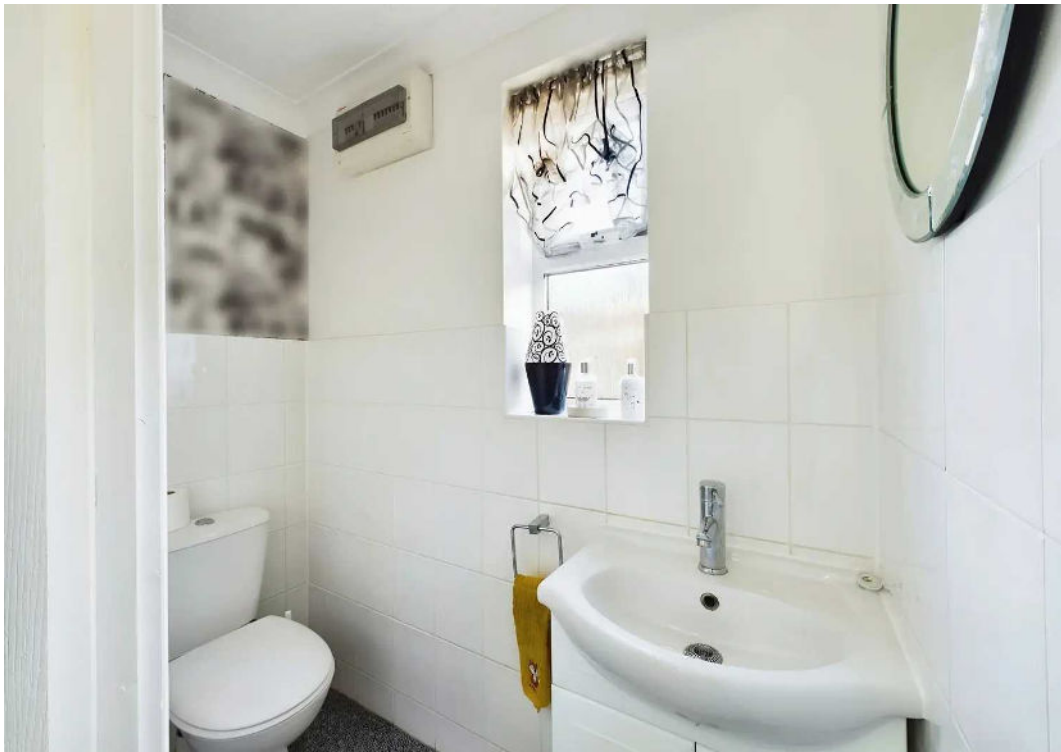
Boasting an extended layout, the property offers a generous total floor area of 126 square metres, providing ample space for both comfortable living and entertaining and with just one owner from new it's been well looked after!

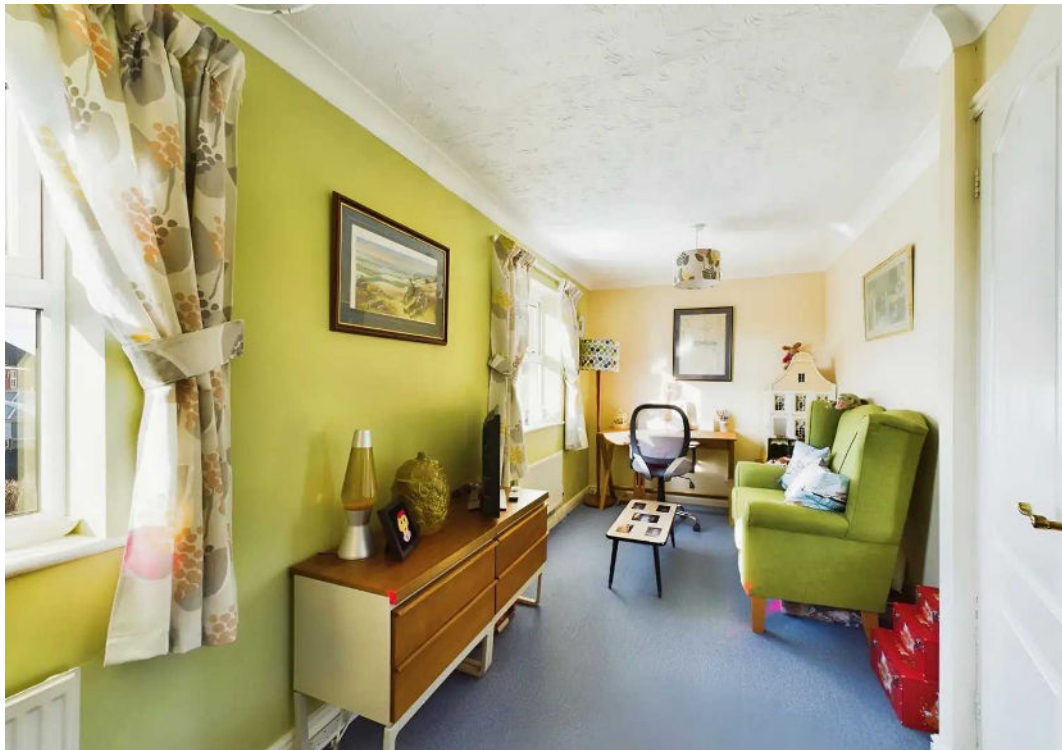
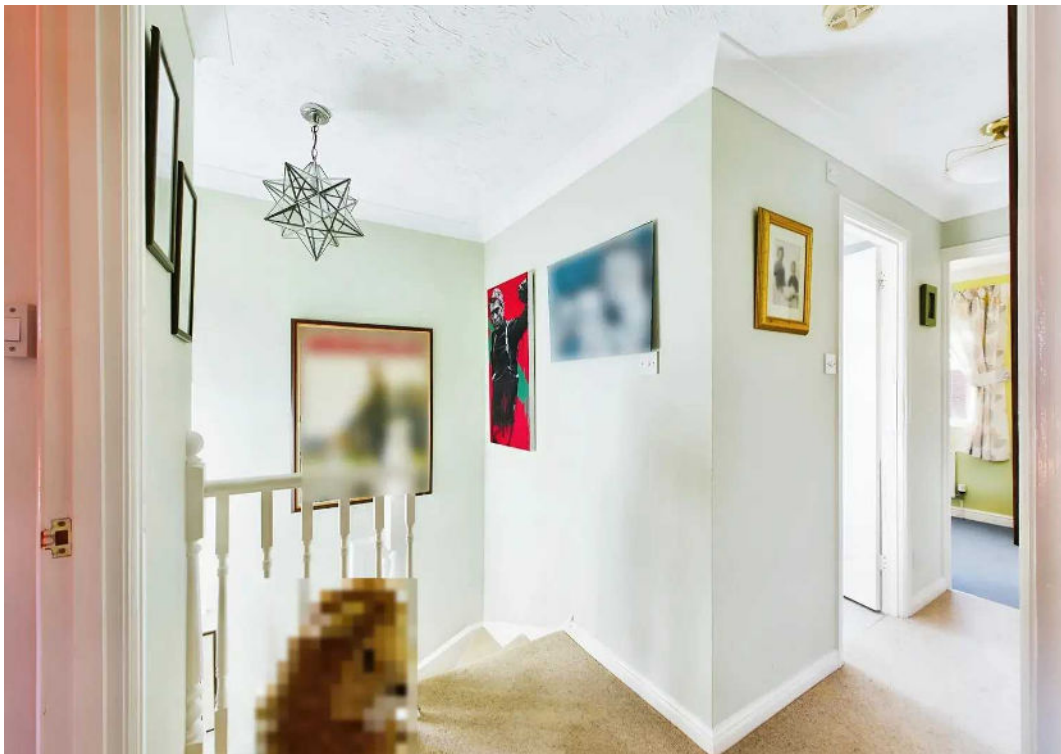
The ground floor of this extended detached family home features an open plan kitchen/dining room, creating a perfect space for family meals and hosting guests.

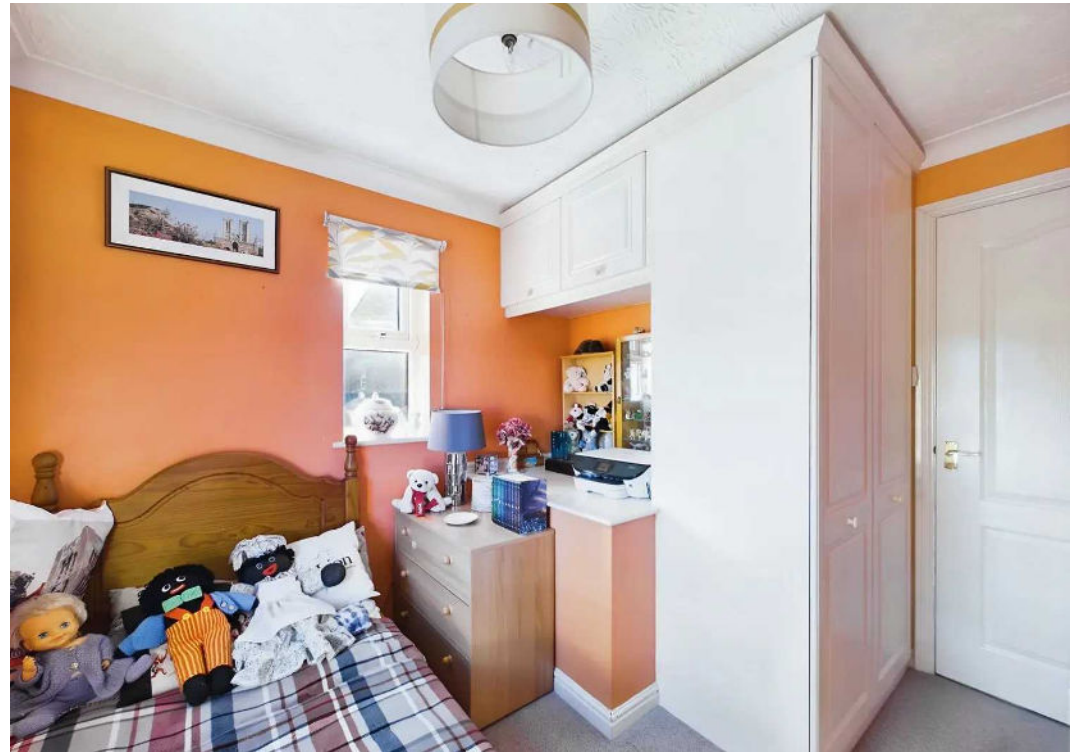
Additionally, there is a second dining room and an office at the rear of the property, offering flexibility for those who require a designated workspace. Completing the ground floor is a charming uPVC conservatory, overlooking the south-west facing garden, providing a peaceful retreat to relax and unwind after a long day. The living room comes with front facing aspect. With close proximity to local shops and schools, this property offers convenience at your doorstep.

The outside space of this property is equally impressive, with a south-west facing garden that truly captures the sunlight throughout the day. Fully enclosed by fencing, the garden features a well-maintained lawn, a patio area, as well as mature shrubs and borders, creating a tranquil outdoor oasis. A gated access leads to the side garden, also fully enclosed and featuring a seating area, mature borders, and shrubs. The front garden is easily accessible











Floor 0 Building 1



Floor 1 Building 1



Floor 0 Building 2



Approximate total area⁽¹⁾

1670.84 ft²

155.23 m²

Reduced headroom

6.12 ft²

0.57 m²

(1) Excluding balconies and terraces

⊞ Reduced headroom
(below 1.5m/4.92ft)

While every attempt has been made to ensure accuracy, all measurements are approximate, not to scale. This floor plan is for illustrative purposes only.

GIRAFFE360



Hudson Homes Estate Agents

122a Main Street, Yaxley - PE7 3LP

01733 788222

info@hudson-homes.co.uk

www.hudson-homes.co.uk/

