



53 Temple Grange, Peterborough
Peterborough



Guide Price **£220,000**



53 Temple Grange

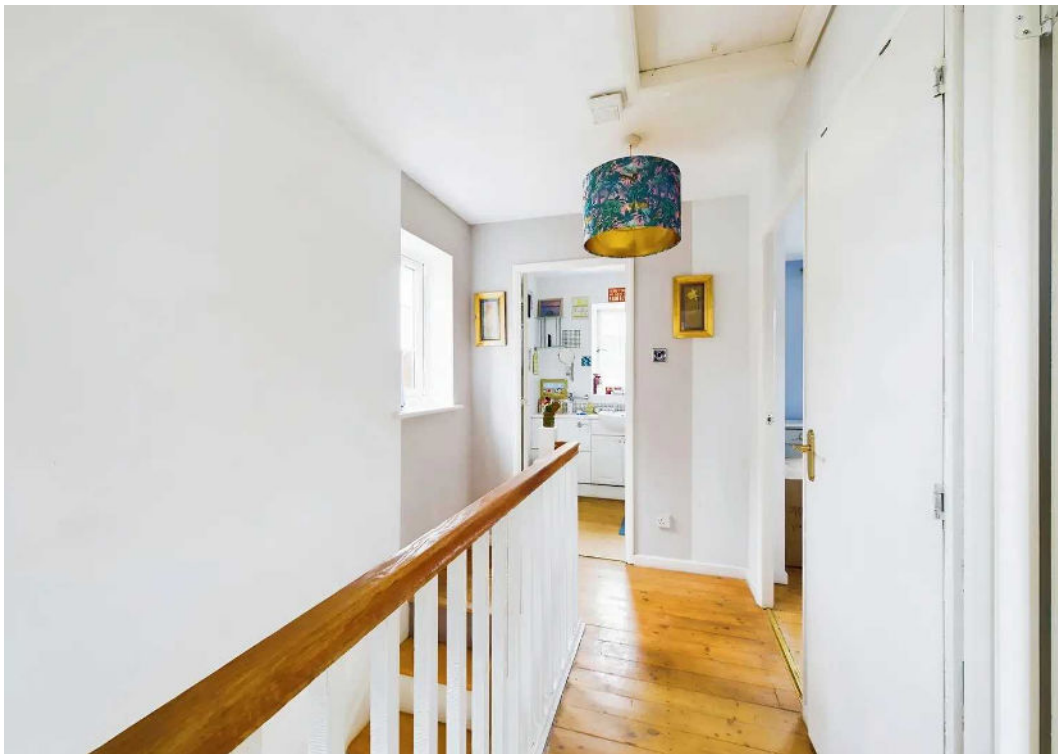
Peterborough, Peterborough

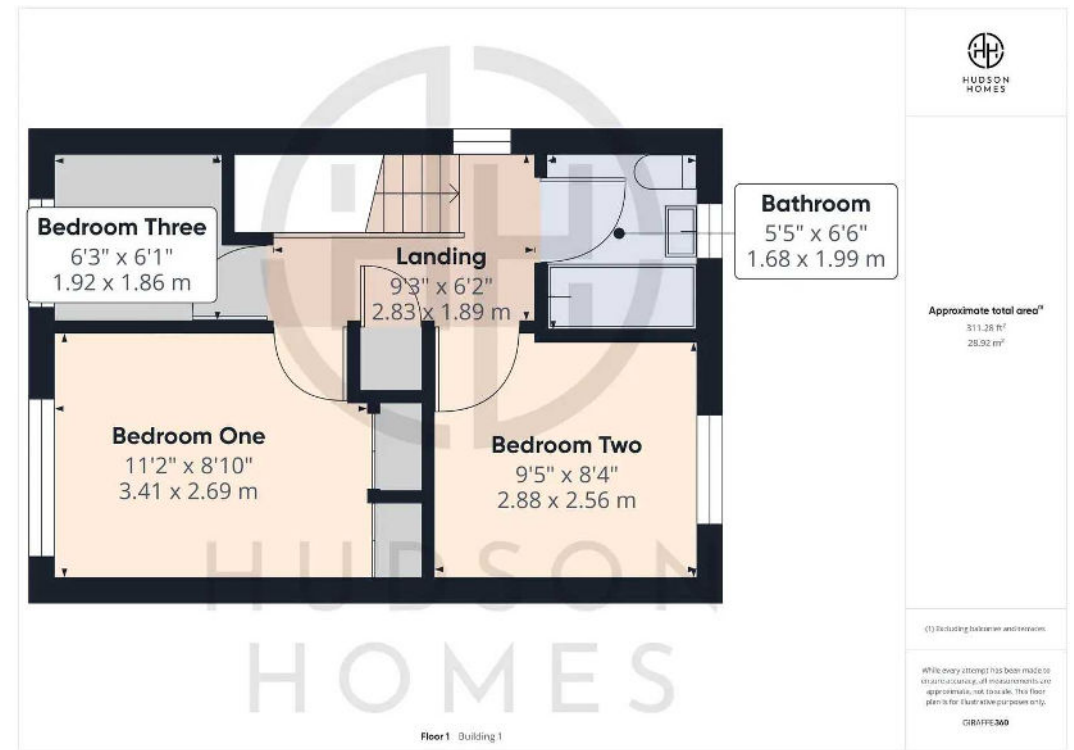
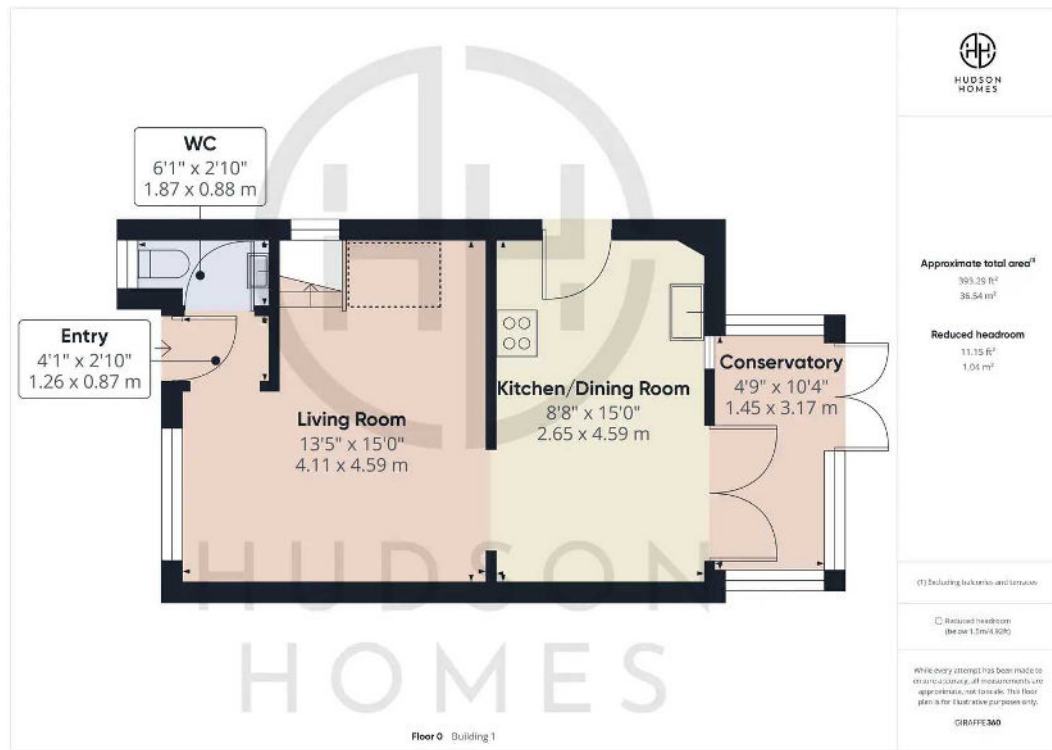
This cosy 3-bedroom semi-detached house is just waiting for you to make it your own! With a total floor area of 65 square metres, there's plenty of space to spread out and get comfortable. Plus, with a council tax band of B (£1527), you'll be feeling those savings in no time!

TOTAL FLOOR AREA 65 SQUARE METRES

- COUNCIL TAX BAND = B £1527
- uPVC CONSERVATORY
- SINGLE GARAGE & DRIVEWAY PARKING FOR 3-4 CARS
- KITCHEN/DINING ROOM
- QUIET CUL-DE-SAC LOCATION
- CLOSE TO SHOPS & SCHOOLS
- IDEAL FIRST TIME BUY
- BATHROOM & CLOAKROOM
- GAS CENTRAL HEATING & uPVC DOUBLE GLAZING









HUDSON
HOMES

Garage

16'6" x 8'3"
5.05 x 2.53 m

Approximate total area⁽¹⁾

136.31 ft²

12.66 m²

(1) Excluding balconies and terraces

While every attempt has been made to ensure accuracy, all measurements are approximate, not to scale. This floor plan is for illustrative purposes only.

GIRAFFE360



Hudson Homes Estate Agents

122a Main Street, Yaxley - PE7 3LP

01733 788222

info@hudson-homes.co.uk

www.hudson-homes.co.uk/

