



21 Church Street, Yaxley
Peterborough



£600,000



21 Church Street

Yaxley, Peterborough

Welcome to Church Street, Yaxley - a stunning, extended 1930's detached family home in the popular village of Yaxley, just outside of Peterborough. Boasting plenty of character, this home is situated on a sizeable plot, with ample drive way leading to tandem garage and a large rear garden t-shaped covering the rear of both neighbours.

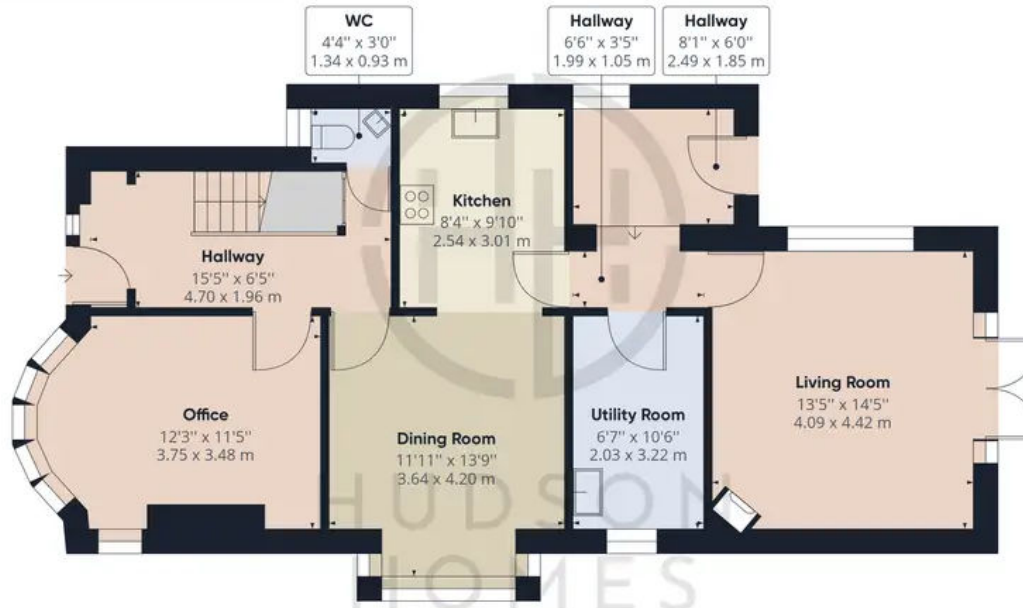
On entering the property you are sure to be impressed by the hallway with original Milton tile flooring and decorative coving. Off the hallway is a downstairs WC and study. To the right is an elegant dining room, perfect for entertaining family and friends.

Leading on from the dining room is a bright and airy kitchen with plenty of storage. The kitchen offers direct access to a separate utility room and a striking living room to the rear with views over the garden.

Upstairs, this property offers four bedrooms - three of which are generous in size. The master bedroom is situated at the rear of the property with ensuite bathroom and views over the garden. There is also a family bathroom on this floor.

The gardens are laid mainly to lawn with raised patio and decking area. This provides plenty of opportunity for outdoor entertaining or simply relaxing in the sun. With all this home has to offer, it is clear why Church Street, Yaxley would



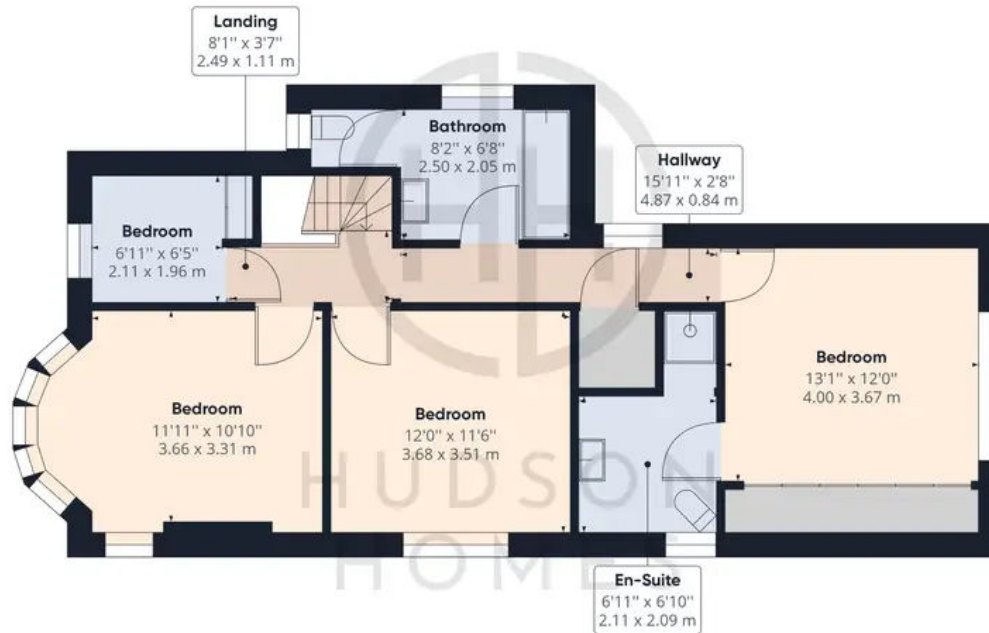


Floor 0

Approximate total area⁽¹⁾

1614.49 ft²

149.99 m²



Floor 1

(1) Excluding balconies and terraces

While every attempt has been made to ensure accuracy, all measurements are approximate, not to scale. This floor plan is for illustrative purposes only.

GIRAFFE 360



Hudson Homes Estate Agents

122a Main Street, Yaxley - PE7 3LP

01733 788222

info@hudson-homes.co.uk

www.hudson-homes.co.uk/

