



205 F, Park Road, Peterborough
Peterborough



In Excess of £360,000



205 F, Park Road

Peterborough, Peterborough

Welcome to Park Road, Peterborough. This delightful freehold property offers two self-contained apartments with tenants in situ and is situated in a popular and convenient residential area, with excellent local amenities and transport links close by.

The ground floor apartment has two bedrooms, a large living room, a fully fitted kitchen, and a bathroom. The first floor apartment is a three bedroom duplex and benefits from two bathrooms, a well-proportioned living room, a fully fitted kitchen and access to a communal court yard garden to the rear.

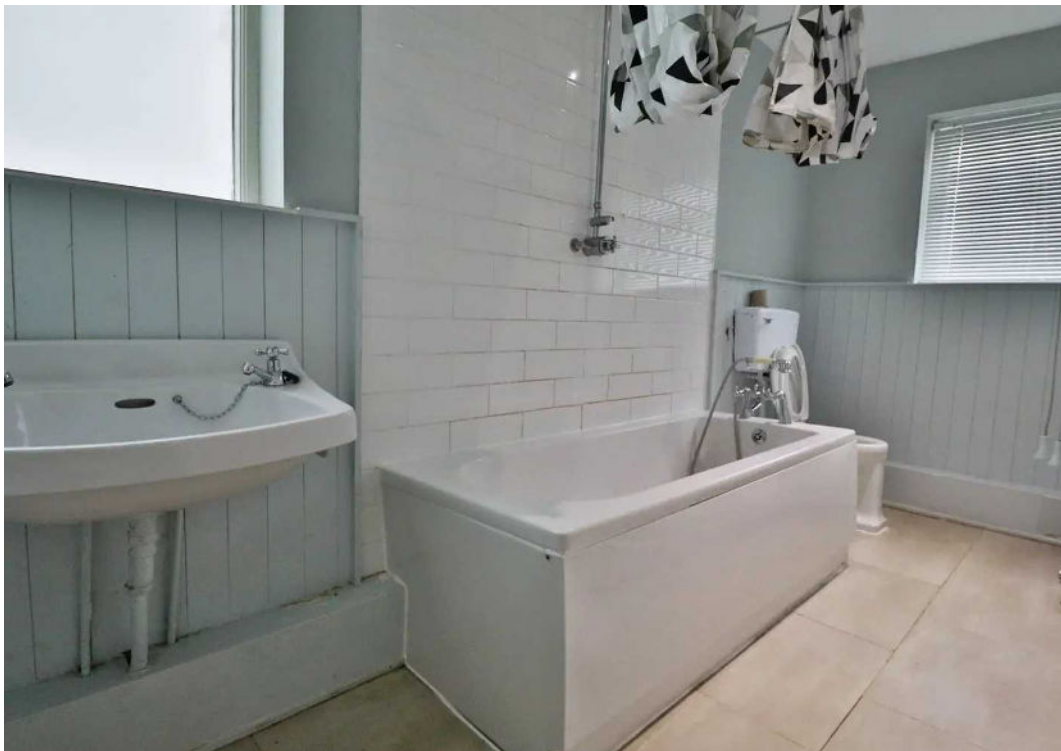
The property also comes with two single garages and parking to the rear. It has been maintained to a good standard throughout and is perfect for buy-to-let investors to keep as two separate apartments or to convert into HMO's.

This property is conveniently located close to the city centre, giving easy access to all the shops, restaurants and other amenities that this vibrant city has to offer.

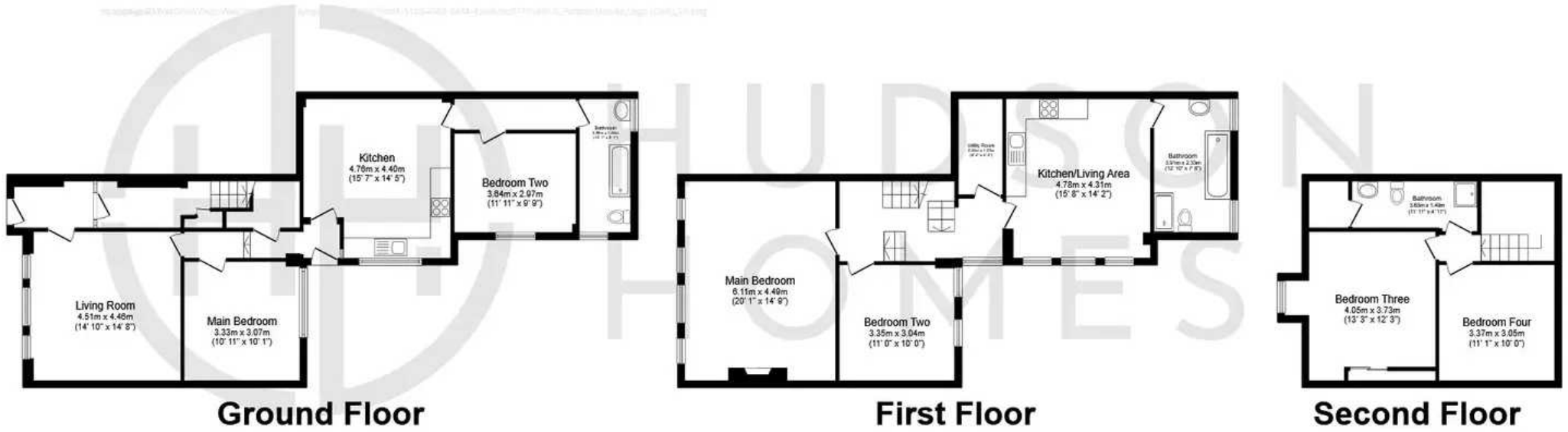
Peterborough is within easy reach of other towns and cities in the area, such as Cambridge, London and Norwich as well as the Norfolk Coastline. Peterborough railway station serves fast trains directly into Kings Cross Station in London. There are also excellent bus services operating throughout the city.

The area is close to several green spaces including Central Park, which is approximately 1 mile away.

- Potential Income Of £25,200 Per Annum
- Two Bedroom & Three Bedroom Apartment
- Freehold









Hudson Homes Estate Agents

122a Main Street, Yaxley - PE7 3LP

01733 788222

info@hudson-homes.co.uk

www.hudson-homes.co.uk/

