

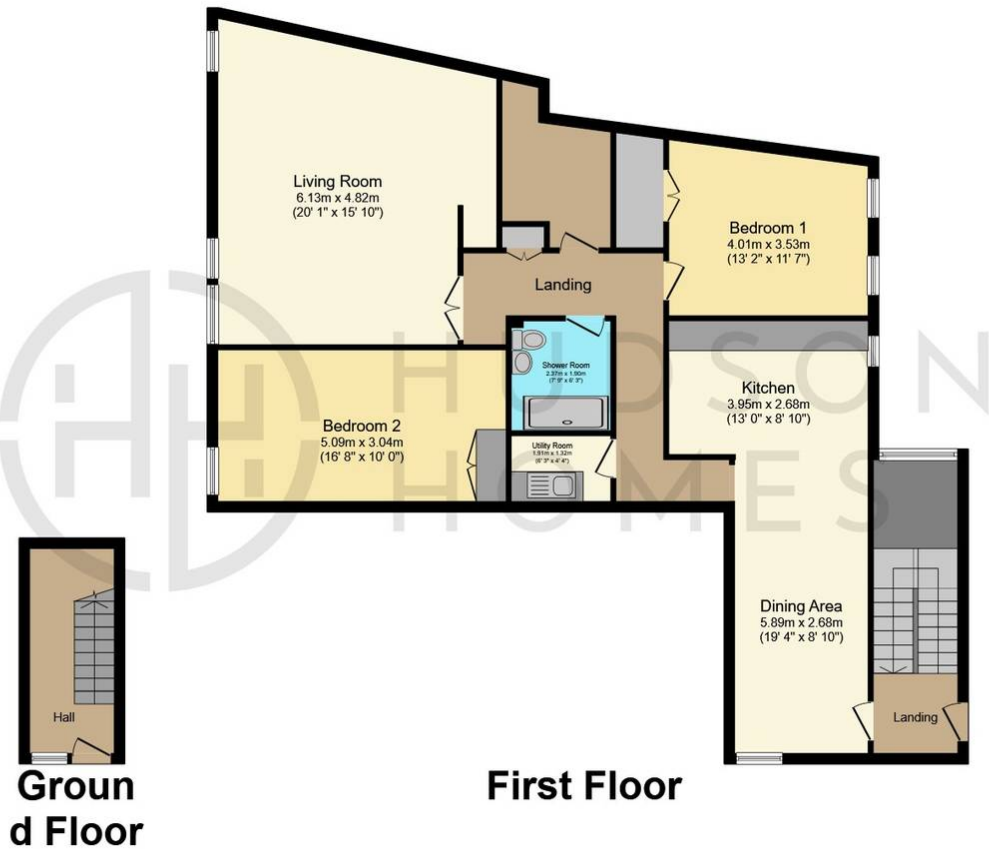


Flat 1 Great Whyte, Eagle House Great Whyte, Ramsey

£145,000 Leasehold

Sale Of TWO Apartments • Perfect Investment Opportunity • Combined Income Of £14,940 Per Annum • 1 x 1 Bedroom Apartment & 1 x 2 Bedroom Apartment • Low Ground Rent & Insurance Costs





Total floor area 136.3 sq.m. (1,467 sq.ft.) approx

This plan is for illustration purposes only and may not be representative of the property. Plan not to scale. Powered by PropertyBox

You can include any text here. The text can be modified upon generating your brochure.