



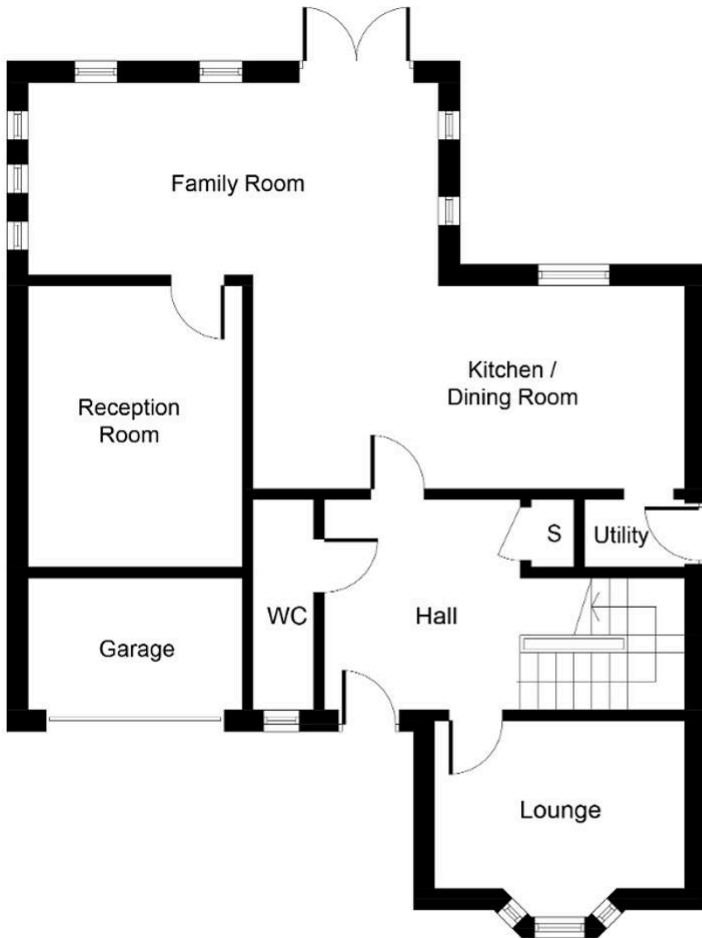
19 Morgan Close, Yaxley

£410,000 Freehold

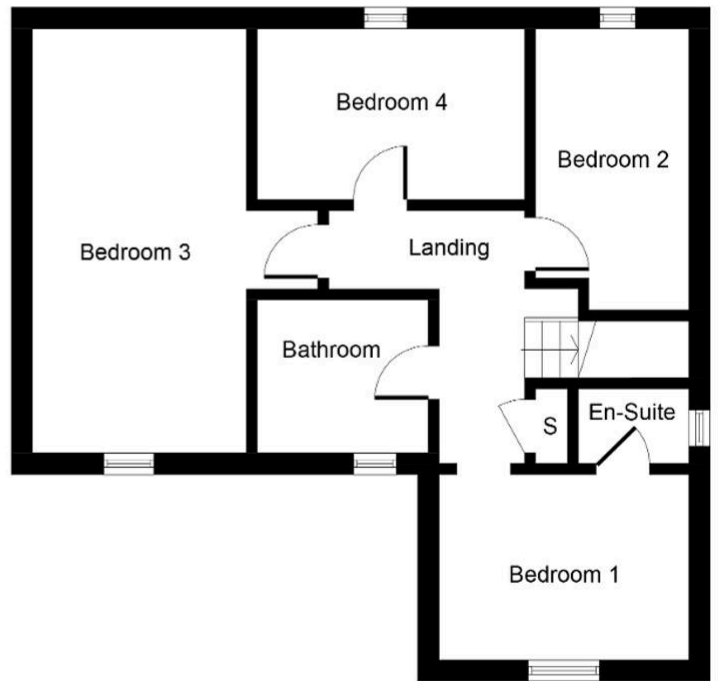
REAR SUNROOM with BIFOLDS INTO THE GARDEN • OPEN PLAN KITCHEN/DINER/SUNROOM • RE-FITTED KITCHEN & UTILITY ROOM • BEDROOM ONE WITH FITTED WARDROBES & RE-FITTED EN-SUITE • BATHROOM & CLOAKROOM • SOUTH FACING LANDSCAPED GARDEN • INTERNAL FLOOR AREA 111 SQUARE METRES • PARKING TO THE FRONT FOR 3/4 VEHICLES • SHORT WALK TO FOUR FIELDS SCHOOL & CO-OP SUPERMARKET • GARAGE CONVEYER BELT TO RECEPTION ROOM



HUDSON
HOMES



Ground Floor



First Floor

Whilst every attempt has been made to ensure the accuracy of the floor plan contained here, measurements of doors, windows, rooms and any other items are approximate and no responsibility is taken for any error, omission, or mis-statement. This plan is for illustrative purposes only and should be used as such by any prospective purchaser or tenant. The services, systems and appliances shown have not been tested and no guarantee as to their operability or efficiency can be given.

Copyright V360 Ltd 2022 | www.houseviz.com

01733 788222

info@hudson-homes.co.uk

8 Crusader Court

PE7 3PU